

houses for the next millennium

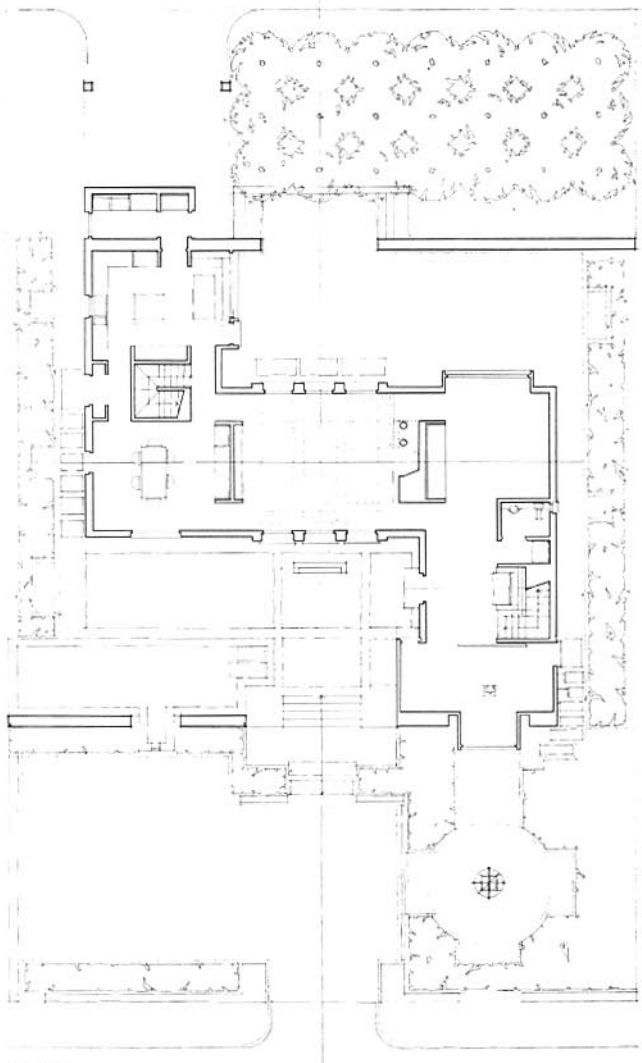
Texas town house

Architects: MOORE/ANDERSSON

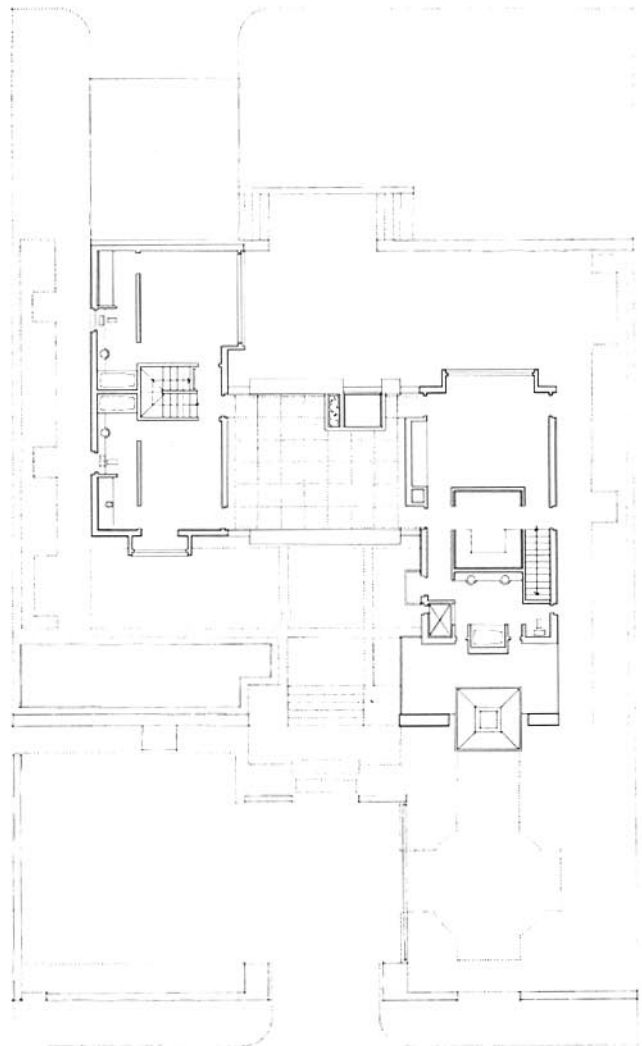
Moore/Andersson Architects designs
an innovative house that anticipates tomorrow's
land-use issues while evoking timeless
images of home

The entry court stars a fountain and reflecting pool.
Above: A wide staircase leads to the front door past the office on the right.

houses for the next millennium



First Floor



Second Floor



Floor plans (top) show how the ground-floor wings flank a central living-room pavilion and how the roofed terrace on top of this pavilion links the second-story master suite and two other bedrooms.

Above: View from the street of the house with its 75-foot frontage. Home office faced with a reflective metal finish is at the right.

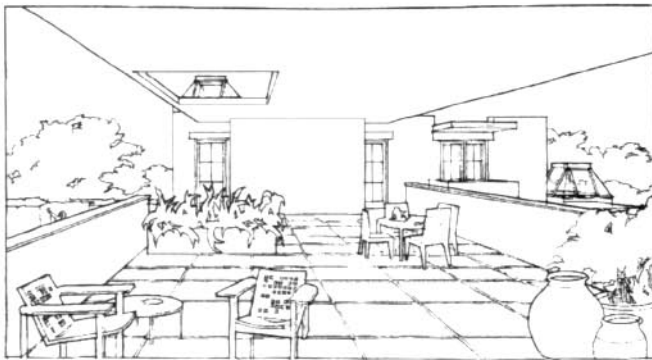
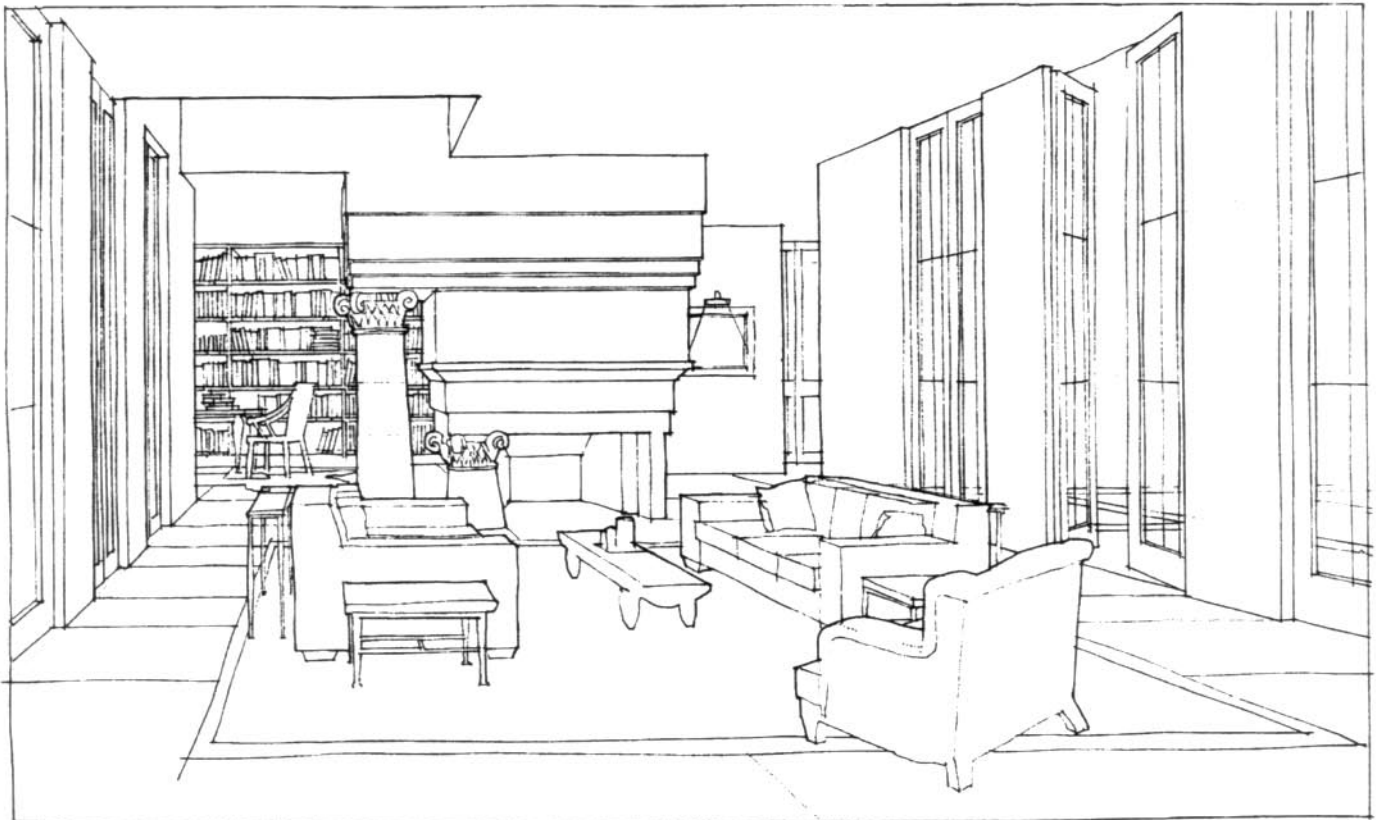
FOR MORE DETAILS, SEE READER INFORMATION.

“This is a wonderful time for architecture—a time of both evolution and innovation,” Arthur Andersson says. He is a founding partner in Austin-based Moore/Andersson, the last architectural office established by Charles Moore, and one of several firms that carry on Moore’s legacy, which honors residential design as one of the profession’s highest callings.

This house, designed for House Beautiful by the Texas firm, reflects Andersson’s assessment of our pivotal moment in time. The scheme is evolutionary in that columns, French doors, and a central pavilion evoke timeless images of home. Yet the plan, materials, and use of the site are aimed straight at the 21st century.

Andersson, who worked on this project with Steven Dvorak and Chris Wise, considered House Beautiful’s request that each of the ten participating architects create a house appropriate to their particular region. He says, “Thinking of domestic life in Texas in the next millennium, it seemed natural to select a site that represented this state’s hill country. But instead of choosing a large, rambling parcel of land, we thought our site and scheme should be more modest, more aware of land-usage

houses for the next millennium



The light-filled living room (top) adjoins the library. Center: The upstairs terrace has a roof to shield it from the sun, and open sides for cross ventilation. Above: The front facade as viewed from street.

issues facing the new century. So we decided to limit ourselves to a quarter-acre single-family lot."

To enable the occupants to work where they live, the plan layers the spaces from public to private. From the street or a motor court a garden leads to a building that may be used as an office. To distinguish this building from the house, the architects specified a thin-walled construction of metal sheets, perhaps of titanium. They further specified that a space for a conduit be left in the wall for future technological hookups.

An entry hall adjacent to an open court links the office to the house. The first floor is organized around a central pavilion for living and entertaining. At one side stands the library, at the other the dining, kitchen, and laundry areas. Upstairs, a roofed terrace connects the master bedroom to two smaller bedrooms. "The pavilion on the first floor would be made perhaps of a conservative amount of wood, with lots of steel-framed glass windows and doors to make it light and airy," says Andersson.

The remainder of the house is very simple and, in contrast to the pavilion and the home-office building in front, is connected actually and symbolically to the land. Andersson explains, "We have proposed wall construction of sustainable materials, such as straw bales stacked vertically and stuccoed."

Outdoor spaces are as carefully planned as interior rooms. The visitors' entrance is a formally landscaped auto court; the office has its own small contemplation garden. The entry court includes a fountain and dining terrace, and a private garden is adjacent to the library, living and breakfast rooms. An orchard on a rear upper terrace of the property provides fruit and a lush backdrop for views from inside and close by the house.